



**EHS GOVERNANCE  
and ERSEA  
(Eligibility, Recruitment Selection &  
Attendance )  
REQUIREMENTS**

David A. Jones LMSW

Carmen M. Ayala MS.Ed.

---

---

---

---

---

---

---

---



**Objectives**

- To provide an overview of Program Governance & ERSEA
- Examine the pertinent Federal Regulations 45CFR
- Identify how HS & EHS management systems support service delivery

2

---

---

---

---

---

---

---

---



**Program Governance Federal  
Regulations 1304.50**

- FORMAL STRUCTURE OF SHARED GOVERNANCE



3

---

---

---

---

---

---

---

---

## Structure 1304.50 (a)

- Policy Council
- Policy Committee
- Parent Committee




---

---

---

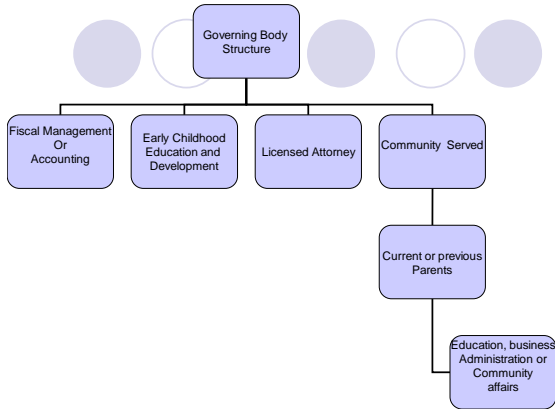
---

---

---

---

---




---

---

---

---

---

---

---

---

## Conflict of Interest

- Financial conflict
- Compensation
- Employment




---

---

---

---

---

---

---

---



- Policy Council Composition 1304.50(b)

- Policy Council Formation



7

---

---

---

---

---

---

---

---

**Community Representatives**  
1304.50 (3)

Local

- Resources
- Services



8

---

---

---

---

---

---

---

---

**Elections 1304.5 (4)**

- Selected annually
- Term limits
- Staff limits
- Proportionate Representation



9

---

---

---

---

---

---

---

---

## Working Together 1304.50 (1)

- Develop
- Review
- Approve or
- Disapprove



10

---

---

---

---

---

---

---

---

## Working Together with Parent Committees 1304.50 (2)

- As a link to public and private organizations
- Communicating to parents
- Planning
- Recruiting volunteer services



11

---

---

---

---

---

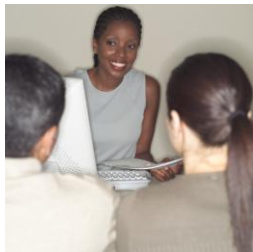
---

---

---

## Parent Committee Responsibilities

- Advise
- Plan, conduct and Participate
- Recruit/Screen staff
- Be reimbursed when necessary



12

---

---

---

---

---

---

---

---





# Financial Management and Stability

1305. (g) (2)

The Governing body has responsibility to:

- Safeguard assets



19

---

---

---

---

---

---

---

---

# Community Relations

The Governing body has responsibility for:

- Addressing community needs
- Marketing
- Ongoing public relations



20

---

---

---

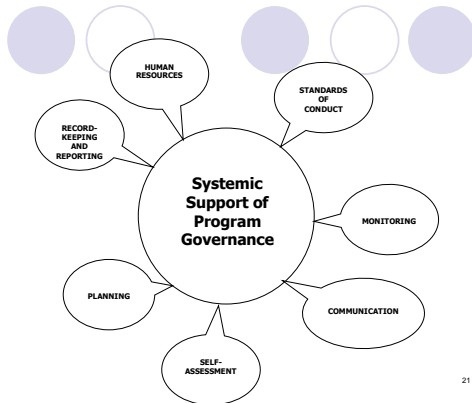
---

---

---

---

---



21

---

---

---

---

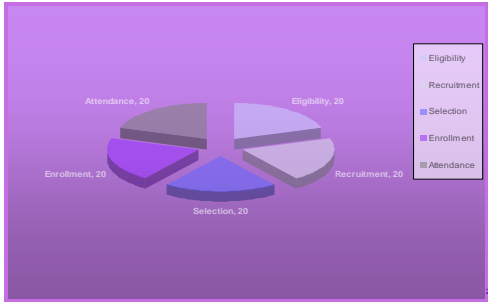
---

---

---

---

## ERSEA 1305



---

---

---

---

---

---

---

---

## Eligibility 1305.4

- Child's Age
- Family Income
- Child Needs
- Family Needs
- Catchment Area



---

---

---

---

---

---

---

---

## Recruitment 1305.5

- Community Assessment
- Develop a Process
- Actively Inform
- Recruitment Area



---

---

---

---

---

---

---

---

## Selection 1305.6

- Criteria
- 90% Low Income
- 10% Disabilities
- Waiting List
- Head Start Act



25

---

---

---

---

---

---

---

---

## Enrollment 1305.7

- Methods
- Funded Enrollment
- Monthly reporting
- Homeless children



26

---

---

---

---

---

---

---

---

## Attendance 1305.8

- Center Based
- Attendance
- Home Based
- Case load
- Classroom



27

---

---

---

---

---

---

---

---

In Closing



28

---

---

---

---

---

---

---

---